



Worldwide Environmental | wep-inc.com
+1 714-990-2700 | info@wep-inc.com



ECU EMULATOR

CUSTOMER'S INSTRUCTIONS

PURPOSE OF AN EMULATOR

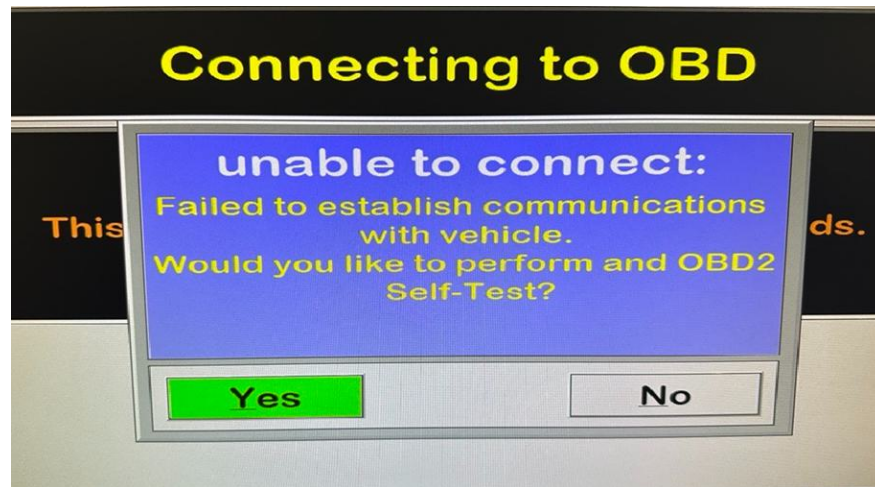
In OBD testing, an "emulator" is a software or hardware device that simulates the behavior of a vehicle's Engine Control Unit (ECU). It allows technicians to test diagnostic tools or other systems without needing a real car connected, essentially mimicking the responses a vehicle's OBD system would send to a scanner in different scenarios.

It is recommended to perform a self test prior to start inspections to ensure the OBDII communication is enabled.



OBD FAILING DURING TEST

When the vehicle is not communicating during the tests, the self-test prompt will display and ask us to perform the OBD self-test.

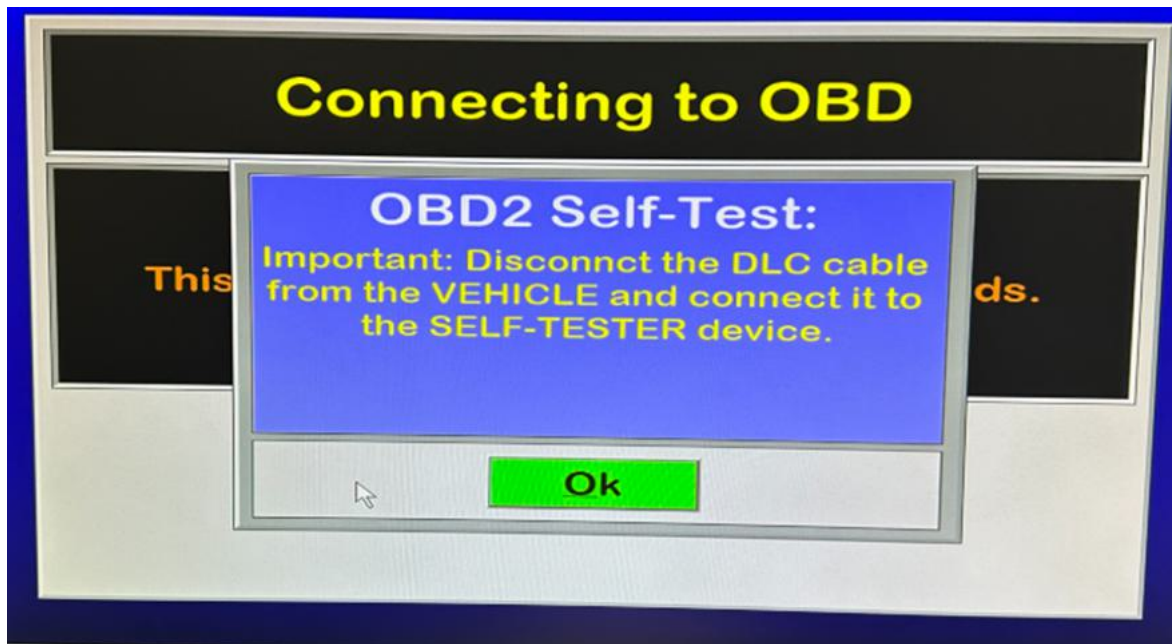


Before clicking Yes, make sure to connect the cable to the emulator and the other end to the cabinet behind to the corresponding OBDII port:

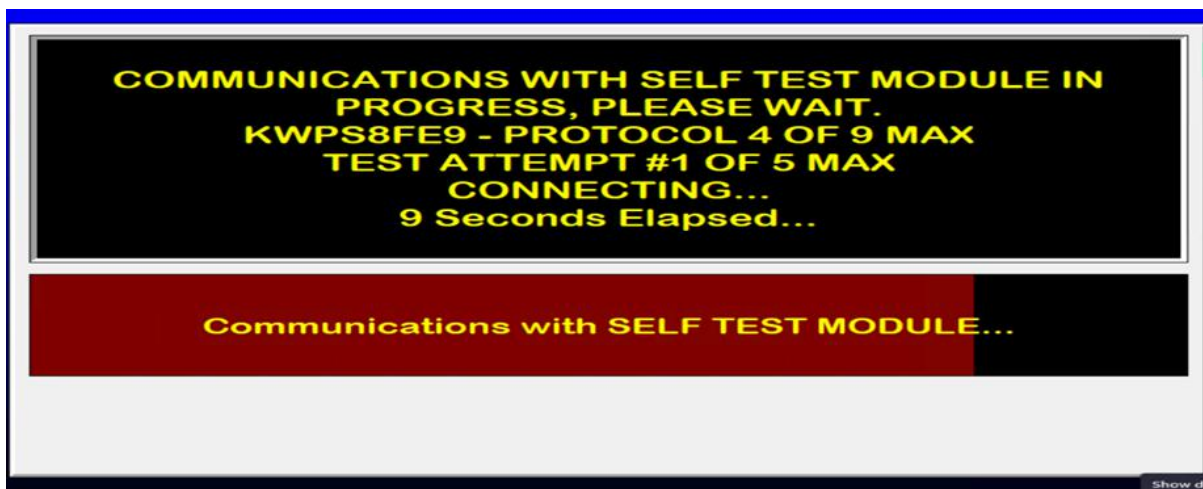


OBD FAILING DURING TEST

Once you verify the cable is connected properly, click Ok:



The software will perform Self Test testing protocols.



OBD FAILING DURING TEST

Once completed, the results will be shown in a report indicating if the tests were passed or failed.

COMMUNICATION:	PASS (COMMUNICATION SUCCESSFUL)
SERIAL NUMBER:	WP007582
FIRMWARE VERSION:	1.06.23 (PASS)
PIN 16 VOLTAGE:	12.1 VOLTS (PASS)
PROTOCOL #1:	JPWM1850 (PASS)
PROTOCOL #2:	JVPW1850 (PASS)
PROTOCOL #3:	I9140808 (PASS)
PROTOCOL #4:	KWPS8FE9 (PASS)
PROTOCOL #5:	KWPF8FE9 (PASS)
PROTOCOL #6:	ICAN11bt500 (PASS)
PROTOCOL #7:	ICAN29bt500 (PASS)
PROTOCOL #8:	ICAN11bt250 (PASS)
PROTOCOL #9:	ICAN29bt250 (PASS)
OVERALL:	PASS
Continue	

If passed you can continue performing inspections, if failed please troubleshoot and try again).

OBDII TROUBLESHOOTING

OBDII does not communicate with the vehicle.	I. Verify that the OBDII cable is securely connected to the vehicle and to the back of the analyzer cabinet.
	II. Press the OBDII reset located directly above the OBDII port on the back of the computer drawer.
	III. Check that the wires are in good condition.
	IV. Check that the pins are not bent.
	V. Disconnect cable and reconnect.
	VI. If none of the above work, ask the WEP team for support.

If that does not work, please contact Worldwide Service Department.